



SOUTH COUNTY REGIONAL WASTEWATER AUTHORITY

BOARD OF DIRECTORS MEETING AGENDA

JUNE 5, 2024
8:00 A.M.

ADMINISTRATION BUILDING

1500 SOUTHSIDE DRIVE
GILROY, CA 95020

1500 Southside Drive
Gilroy, California 95020
Telephone (408) 848-0480
Facsimile (408) 842-0873
scrwamail@ci.gilroy.ca.us
www.cityofgilroy.org

CHAIR:
Rene Spring, Morgan Hill

VICE CHAIR:
Dion Bracco, Gilroy

BOARD MEMBERS:
Marie Blankley, Gilroy
Fred M. Tovar, M.Ed., Gilroy
Yvonne Martinez Beltran, Morgan Hill

SECRETARY:
Saeid Vaziry, P.E.

SCRWA MANAGER:
Jimmy Forbis, Gilroy

COMMENTS BY THE PUBLIC WILL BE TAKEN ON ANY AGENDA ITEM BEFORE ACTION IS TAKEN BY THE SCRWA BOARD OF DIRECTORS. Persons speaking on any matter are asked to state their name and address for the record. Public testimony is subject to reasonable regulations, including but not limited to time restrictions on particular issues and for each individual speaker.

All matters listed under Consent Calendar are considered by Board of Directors to be routine and will be enacted by a single motion. There will be no separate discussion of these items unless a request is made by a member of the public, a Board Member or Staff prior to the time the Board votes on the motion to adopt.

Persons who wish to speak on matters set for PUBLIC HEARING will be heard when the presiding officer calls for comments from those persons who are in support of or in opposition thereto. After persons have spoken, the hearing is closed and brought to Board level for discussion and action. There is no further comment permitted from the audience unless requested by the Board.

In compliance with the Americans with Disabilities Act, SCRWA will make reasonable arrangements to ensure accessibility to this meeting. If you need special assistance to participate in this meeting, please contact the Secretary to the Joint Powers Authority at (408) 848-0480 at least 48 hours prior to the hearing for accommodations. Please ask for assistance at the Secretary's desk PRIOR to the start of the meeting or during a break in the meeting.

If you challenge any planning or land use decision made at this meeting in court, you may be limited to raising only those issues you or someone else raised at the public hearing held at this meeting, or in written correspondence delivered to the Board of Directors at, or prior to, the public hearing.

A Closed Session may be called during this meeting pursuant to Government Code Section 54956.9(b)(1) if a point has been reached where, in the opinion of the legislative body of the Joint Powers Authority on the advice of its legal counsel, based on existing facts and circumstances, there is a significant exposure to litigation against the Joint Powers Authority.

Meeting Schedule: The Joint Powers Authority meets regularly on the first Wednesday of each quarter, at 8:00 a.m. If a holiday should fall on the regular meeting date, the meeting will be rescheduled to the following Wednesday.

Wednesday, June 5, 2024, 8:00 A.M.

I. Call to Order

- A. Certification of Posting of the Agenda
- B. Roll Call

II. Consent Calendar (by Motion)

- A. Approval of Minutes of the April 3, 2024 meeting (copies)

III. Presentation by Members of the Public on Items not on the Agenda

IV. Bids and Proposals

V. Old Business

VI. New Business

- A. Selection of SCRWA Chairperson, Vice Chairperson, and Secretary for Fiscal Year 2024-25 (copies)
- B. Contract Recommendation for Purchase of Septage Receiving Station Equipment (copies)

VII. Communications

- A. Cash and Investment Report as of March 31, 2024 (copies)

VIII. Report

- A. Jacobs
 - 1. Wastewater Acronyms (copies)
 - 2. Plant Reports – March and April 2024 (copies)
 - 3. Recap of Expenses – March and April 2024 (copies)
 - 4. Septage Report – March and April 2024 (copies)
- B. Valley Water
- C. Stantec
 - 1. Engineering Projects Report – June 2024 (copies)
- D. SCRWA Manager
- E. SCRWA Attorney
- F. Board Members

G. Adjourn



**SOUTH COUNTY REGIONAL
WASTEWATER AUTHORITY**

**BOARD OF DIRECTORS
MEETING MINUTES**

APRIL 3, 2024

1500 Southside Drive
Gilroy, California 95020
Telephone (408) 848-0480
Facsimile (408) 842-0873
scrwamail@ci.gilroy.ca.us
www.cityofgilroy.org

CHAIR:
Rene Spring, Morgan Hill

VICE CHAIR:
Dion Bracco, Gilroy

BOARD MEMBERS:
Marie Blankley, Gilroy
Yvonne Martinez Beltran, Morgan Hill
Fred M. Tovar, M.Ed., Gilroy

SECRETARY:
Saeid Vaziry, P.E.

SCRWA MANAGER:
Jimmy Forbis, Gilroy

MEMBERS PRESENT:
Rene Spring
Dion Bracco
Marie Blankley
Yvonne Martinez-Beltran

STAFF PRESENT:
Gilroy
Jimmy Forbis
Harjot Sangha
Saeid Vaziry
Jonathon Crick
Heath McMahon

Morgan Hill
Chris Ghione

-
- I. Call to Order
Chairman Spring called the meeting to order at 8:00 A.M.
 - A. Certification of posting of the agenda
Kerry Edmonds reported the agenda was posted on March 28, 2024 @ 11:35 A.M.
 - B. Roll Call
4 Board Members were present, Board Member Tovar was absent

 - II. Consent Calendar
 - A. Approval of minutes for the January 4, 2024 meeting
Motion to approve Consent Calendar moved by Director Bracco, seconded by Director Beltran
Ayes 4, Spring, Bracco, Blankley, Beltran
Nays 0, Abstain 0
Vote: Motion Carried

 - III. Presentation by members of the public on items not on the agenda
None

 - IV. Bids and Proposals
None

 - V. Old Business
 - A. Saeid Vaziry reviewed the proposed ordinance presented at the January 4, 2024 Board Meeting. This would go into effect 30 days from today, if the Board accepts this motion.
Motion to Adopt Ordinance 2024-01 of the SCRWA amending the Existing Ordinance 2013-01 to regulate sewer use and set uniform requirements for discharge into the wastewater collection and treatment system moved by Director Bracco, seconded by Director Beltran.
Ayes 4, Spring, Bracco, Blankley, Beltran
Nays 0, Abstain 0
Vote: Motion Carried

 - VI. New Business
 - A. Saeid Vaziry presented to the SCRWA Board the amendment to the Conflict of Interest Code as there were designated position and title changes within the City of Gilroy.
Motion to accept Resolution 2024-02 of the SCRWA Conflict of Interest Code, moved by Director Blankley, seconded by Director Beltran.
Ayes 4, Spring, Bracco, Blankley, Beltran
Nays 0, Abstain 0
Vote: Motion Carried

 - B. Saeid Vaziry presented to the SCRWA Board the award recommendation to purchase Linear

Mixers for the Oxidation Ditch.

Motion to approve the purchase of four Linear Mixers for an Oxidation Ditch at the secondary treatment by Director Beltran, seconded by Director Bracco.

Ayes 4, Spring, Bracco, Blankley, Beltran

Nays 0, Abstain 0

Vote: Motion Carried

VII. Communications

A. Cash and Investment Report as of December 31, 2023

Harjot Sangha presented the Cash and Investment Report as of December 31, 2023

B. Audited Financial Statement for the Year Ended June 20, 2023

Harjot Sangha presented the Audited Financial Statement. Board commented on a date that needs to be corrected within the report.

C. Announcement Regarding SCRWA Receiving Top Award by the Water Environmental Association

Saeid Vaziry announced the SCRWA received Plant of the Year again for the Monterey Bay section in addition was in the top 3 for plants in the State of California.

VIII. Reports

A. Jacobs

John Edgar reviewed plant numbers and reported there were no exceedances this past quarter.

B. Valley Water

Director's Varela and Santos were in attendance. Director Varela mentioned their partnership with the Army Corps of Engineers, who are very engaged and provide financial resources to cover the work that they do in various regions. Valley Water is assisting smaller water districts San Benito, and Pacheco with volunteers, etc. as they don't have the resources that Valley Water has. It's important to keep the creeks clean and safe so as not to flood.

C. Stantec

Billy Wong presented the engineering projects report, which include the Plant Expansion Project, Permit Renewal and Recycled Water System Support.

D. SCRWA Manager

None

E. SCRWA Attorney

None

F. Board Members

None

Adjourn

Chairman Spring adjourned the meeting at 8:25 A.M.



Kerry Edmonds, Deputy Secretary of the Board
South County Regional Wastewater Authority



**SOUTH COUNTY REGIONAL
WASTEWATER AUTHORITY**

1500 Southside Drive

Gilroy, California 95020-7042

Telephone (408) 848-0480

Facsimile (408) 842-0873

scrwamail@ci.gilroy.ca.us

DATE: June 5, 2024

TO: JIMMY FORBIS, Authority Manager

FROM: SAEID VAZIRY, P.E., Senior Environmental Engineer

SUBJECT: **SELECTION OF CHAIRPERSON, VICE CHAIRPERSON AND
SECRETARY FOR FISCAL YEAR 2024-2025**

Recommendation

It is recommended that the SCRWA Board select, by motion, a Chairperson, Vice Chairperson and Secretary for the fiscal year 2024-2025.

Summary

According to the SCRWA (Authority) bylaws, the Authority shall have three officers: Chairperson, Vice Chairperson and Secretary from among its Directors; the Chairperson and Vice Chairperson need to be a Director, but the Secretary may, but not need, be a Director. The officers hold office for a period of one year, commencing July 1 of each fiscal year. If an officer is resigned, the SCRWA Board shall appoint another person to fill the vacant office for the remainder of that fiscal year. An officer may resign at any time.

According to the bylaws, in the absence or disability of the Chairperson, the Vice Chairperson shall perform all the duties of the Chairperson, and when so acting shall have all the powers of, and be subject to all the restrictions upon, the Chairperson. The Vice Chairperson shall have such other powers and perform such other duties as from time to time may be prescribed for the Vice Chairperson by the Board or by the bylaws. Additionally, vacancy caused by resignation of any officer may be filled by appointment by the Board, or by the Chairperson until such appointment by the Board.

The Secretary keeps at the principal office of the Authority a book of minutes of all meetings of the Board, with the time and place of holding, how called or authorized, the notice thereof given, and the names of those present at such meetings. The Secretary also attests to the signature of the Chairperson on all documents executed by the Chairperson on behalf of the Authority.



**SOUTH COUNTY REGIONAL
WASTEWATER AUTHORITY**

1500 Southside Drive

Gilroy, California 95020-7042

Telephone (408) 848-0480

Facsimile (408) 842-0873

scrwamail@ci.gilroy.ca.us

DATE: June 5, 2024

TO: JIMMY FORBIS, Authority Manager

FROM: SAEID VAZIRY, P.E., Senior Environmental Engineer

SUBJECT: **CONTRACT RECOMMENDATION FOR PURCHASE OF SEPTAGE
RECEIVING STATION EQUIPMENT**

Recommendation

Staff recommends approval of a contract with JWC Environmental for the purchase of equipment for the septage receiving station in the amount of \$198,962.

Executive Summary

Staff is bringing before the Board a request to approve a contract for purchase of self-contained septage receiving station equipment at the septic offloading area by the headworks to ensure a safe, acceptable, and accountable method to discharge wastewater into the plant. This procurement involves specialized equipment, and the acquisition is based on the City of Gilroy Purchasing Policy for sole source bid exemption. Quote was received from the manufacturer of this specialty equipment. Funding is programmed in improvements budget.

Background

SCRWA provides septage service for the entire south county mandated by the Santa Clara County regulations and receives septage generated in the surrounding communities, mainly from small septic type disposal systems in unincorporated areas of the county. The explicit intent of the program is to protect the health and safety of all users, in addition to on-site personnel and visitors.

SCRWA charges a dump fee of 15 cents per gallon, and it generates approximately \$340,000 per year. The quantity of discharge is self-reported by the haulers for billing purposes. These discharges are currently not monitored, and the flow is not metered. Rather, usage and reporting are on an honor system.

Septage Process Description

Haulers enter the main plant site for disposal and drive to the septage receiving station. The station is located adjacent to plant headworks, where the flow is transferred for treatment. Only one truck is allowed inside the station at any time. Haulers are bound by the honor system and submit their own records of when and how much they dump into the system. Plant staff typically do not monitor their work.

Proposed Improvement

The proposed mechanical system provides an alternative septage disposal and billing method while allowing the trucks to dump their loads at the existing station. The equipment includes computer support apparatus and septage receiving controller with hauler station interface and authentication. Haulers will be issued a magnetic card and once onsite, they would swipe the card which opens the main valve and activates the flow meter. The card reader can be connected to a server located in the administration building. It can generate records for each truck as it enters the facility and store it in a central database which could be used for billing purposes.

The proposed improvement will enable operations staff to perform the necessary flow measurement and sampling of filtrate water. It enables greater accountability to receive the septage and serves to better monitor and control discharges by the septage service companies. This work is anticipated to generate more revenue.

Equipment Procurement and Cost

The procurement involves specialized equipment by a single entity, manufacturer of the existing equipment, which, based on technical specifications, best meets the needs of the septage receiving station without requiring major modifications. As such, the equipment is a sole source pursuant to the purchasing policy.

A request for quote, including technical specifications and procedural requirements, was prepared by staff. The vendor that manufactures this specialty equipment, JWC Environmental submitted a quote as follows:

Vendor	Equipment Cost	Sales Tax	Freight Cost	Total Cost
JWC Environmental	\$176,643.00	\$16,119.00	\$6,200.00	\$198,962.00

Upon thorough review by the project management team, it has been determined that the subject equipment meets the septage receiving station’s need for compatibility with existing equipment.

Next Step

If the Board approves the purchase of the new septage equipment, the product will be purchased in July 2024. Its manufacturing lead time is about 18 to 22 weeks, and the equipment installation by the plant staff is anticipated to take approximately six months.

Fiscal Impact

The purchase of the septage equipment is programmed in the budget and funding is available as of July 1, 2024, in expense account 8258520 53135 (Improvements). There is no fiscal impact associated with this item and no additional appropriation is needed.

Attachment: JWC equipment drawings, specification, and cost

HONEY MONSTER® SRS BUDGET INFORMATION

DATE: 5/16/2024
PROJECT: Gilroy, CA - SCRWA WWTP
TO: John Edgar - Project Manager
CC: MISCOWater - Brandon Olson

RE: Gilroy, CA - Specialized Equipment Manufactured to Match Existing WWTP Septage Recieving Station (SRS) by JWC

Enclosed you will find a specification and drawings based on the design parameters listed for SRS which is using JWC's equipment.

Number of units: 1
Model: SRS3235
Material: 304SS
Weight: 5920 lbs. (2685.3 kg)
4" Diameter cast aluminum cam & groove inlet connector
30004T-1204 Muffin Monster grinder w/5 Hp TEFC motor
4" interconnect piping
4" Milliken plug valve w/Rotork actuator
Flow meter
Stainless steel tank with 4" inlet and 12" outlet, with ALE3200-480 auger with a 2 Hp TEFC motor
PC2450 MonsterTrack Billing controller, NEMA 4X 304SS enclosure

Equipment Price	\$176,643.00
Sales Tax (9.125%)	\$16,119.00
Freight (Estimated)	\$6,200.00
Total Price	\$198,962.00

(shipping & handling included)

Included: 6" connection and grinder

Included: Rock trap

Included: Controller components for pH

Not to be used for construction

Please contact Brandon at MISCOWater if you have any questions or require any changes.



JWC
Environmental®



JWC Environmental
2850 S. Red Hill Avenue,
Suite 125
Santa Ana, CA 92705
P: 949-833-3888
F: 714-242-0240

Date: May 01, 2022

Subject: MISCOWater - Sole Source Letter - JWC Muffin Monster & Parts

JWC Environmental is the inventor and owner of the Muffin Monster®, Channel Monster®, Auger Monster®, Screenings Washer Monster™, Honey Monster™ and Monster Screening Systems™. We hold numerous patents and trademarks on these products.

JWC Environmental is the sole manufacturer of these products and the exclusive source for service parts for this equipment.

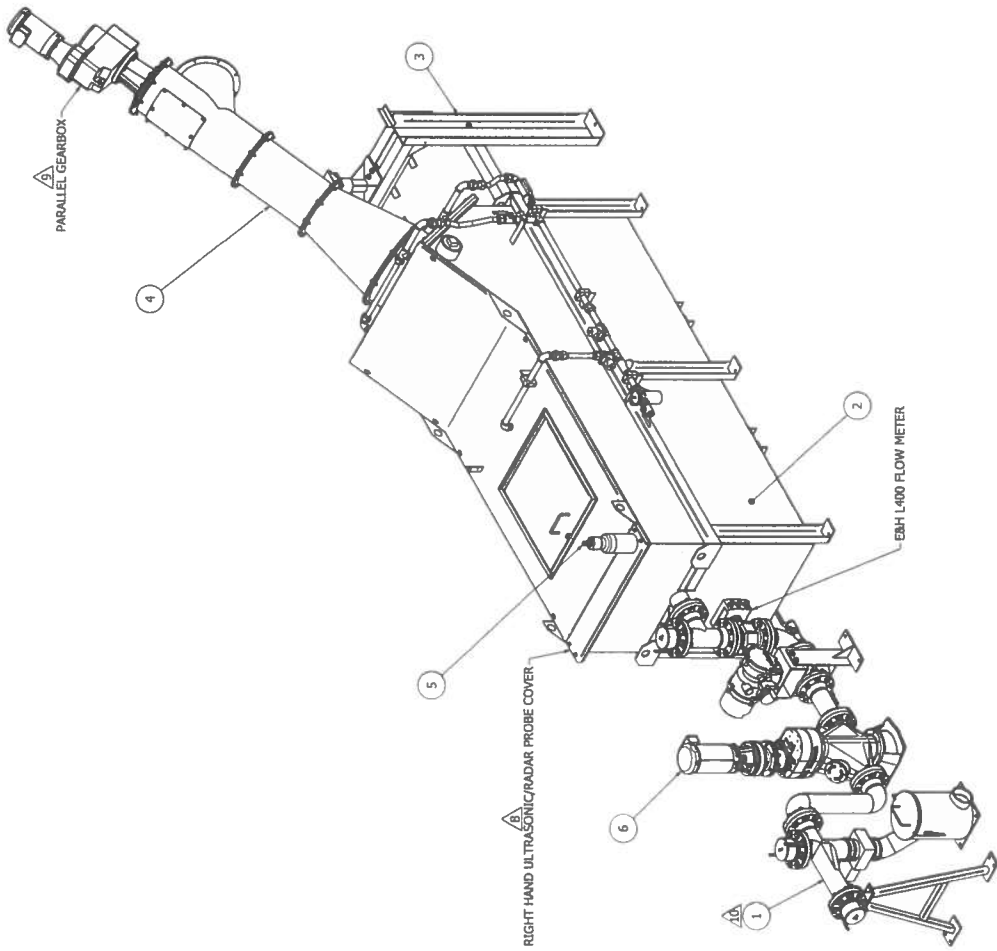
MISCOWater is the exclusive JWC Environmental representative for California, Arizona, New Mexico, Colorado, Wyoming, and parts of Nevada and Texas.

Please feel free to contact me at 714-618-4941 or daveb@jwce.com if we can provide any additional information.

Sincerely,

David Barkey
Western Regional Sales Manager

DATE	REV	DESCRIPTION	ISSUED BY	DATE	REV	DESCRIPTION
2004-01-14	1	INITIAL RELEASE	ALL	2004-01-14	1	INITIAL RELEASE



NOTES UNLESS OTHERWISE SPECIFIED:

- INTERPRET DIMENSIONS IN ACCORDANCE WITH ASME Y14-1994 STANDARDS.
- 1/2" X 3-3/4" (13MM X 145MM) MIN (QTY 20) ANCHOR BOLTS REQUIRED (BY OTHERS) FOR ANCHORING INLET PIPE ASSY., TANK ASSY. & PIVOT SUPPORT STAND ASSY.
- 3/8" X 3-3/4" (10MM X 145MM) MIN (QTY 4) ANCHOR BOLTS REQUIRED (BY OTHERS) FOR ANCHORING GRINDER.
- A DOUBLE BACK-FLOW PREVENTOR IS RECOMMENDED (BY OTHERS) WHEN USING POTABLE WATER FOR SPRAY/FLUSH CONNECTION TO PREVENT SIPHONING INTO WATER SUPPLY.
- REQUIRED WATER SUPPLY 10-15 GPM AT 20-30 PSI (63-.95 U.S. AT 138-207 KPA) FOR EACH SPRAY WASH CONNECTION.
- FIELD MEASUREMENTS MUST BE TAKEN PRIOR TO INSTALLATION TO VERIFY ADEQUATE CLEARANCE AROUND THE EQUIPMENT EXISTS.
- PIVOT AUGER OUT OF TANK BY USING LIFTING POINT "1" ONLY. DO NOT PULL DOWN ON DRIVE END OF AUGER TO PIVOT OUT OF TANK.
- BACK DISCHARGE SHOWN. SEE DRAWING SRA0001-0480 FOR OTHER OPTIONS.
- RIGHT HAND ULTRASONIC/RADAR PROBE COVER SHOWN - SEE DRAWING SRA0001-0480 FOR LEFT HAND VERSION.
- PARALLEL GEARBOX SHOWN - SEE DRAWING SRA3235-0480 FOR RT. ANGLE GEARBOX.
- CLASS 1 DIV.2 RATED FLOW METER (EBH L400) SHOWN - SEE DRAWING SRA0100-1104 FOR CLASS 1 DIV. 1 RATED FLOW METER (EBH P300).

11. MATERIAL OPTIONS VARY.

ZZ = SS FOR 304 SST
 = SU FOR 316 SST

12. ESTIMATED SHIPPING WEIGHTS (LARGE COMPONENTS):
 AUGER: 2500 LBS./1134 KG
 TANK: 2050 LBS./930 KG

CONTROLLED

ITEM	QTY	PART / ASSEMBLY NUMBER	DESCRIPTION	MATERIAL
6	1	3000HT-1204-DI	INLINE GRINDER	DI & ALY STL
5	1	E15-022-106	RADAR LEVEL PROBE WITH 20M/66 FT. CABLE	PVDF
4	1	SRA3235-480-1250	INCLINED AUGER ASSY. W/1250MM TRANSPORT	ALY STL/SST
3	1	SRA1030-0480-ZZ	PIVOT SUPPORT STAND ASSY.	SST
2	1	SRA0001-0480-B-ZZ	SRS TANK ASSY.	SST
1	1	SRA0100-1104-ZZ	4-INCH INLET PIPE ASSY.	SST

UNLESS OTHERWISE SPECIFIED DIMENSIONS ARE IN INCHES (MM)

CONTRACT NO. _____ DATE _____

APPROVALS: _____

DESIGNED BY: _____ CHECKED BY: _____

DATE: 2/17/14

SCALE: 3/16"=1"

MATERIAL: AS NOTED

FINISH: _____

DO NOT SCALE DRAWING

JWC JWC ENVIRONMENTAL
 280 S. REDHILL AVE. SUITE 125, SANTA ANA, CA 92705

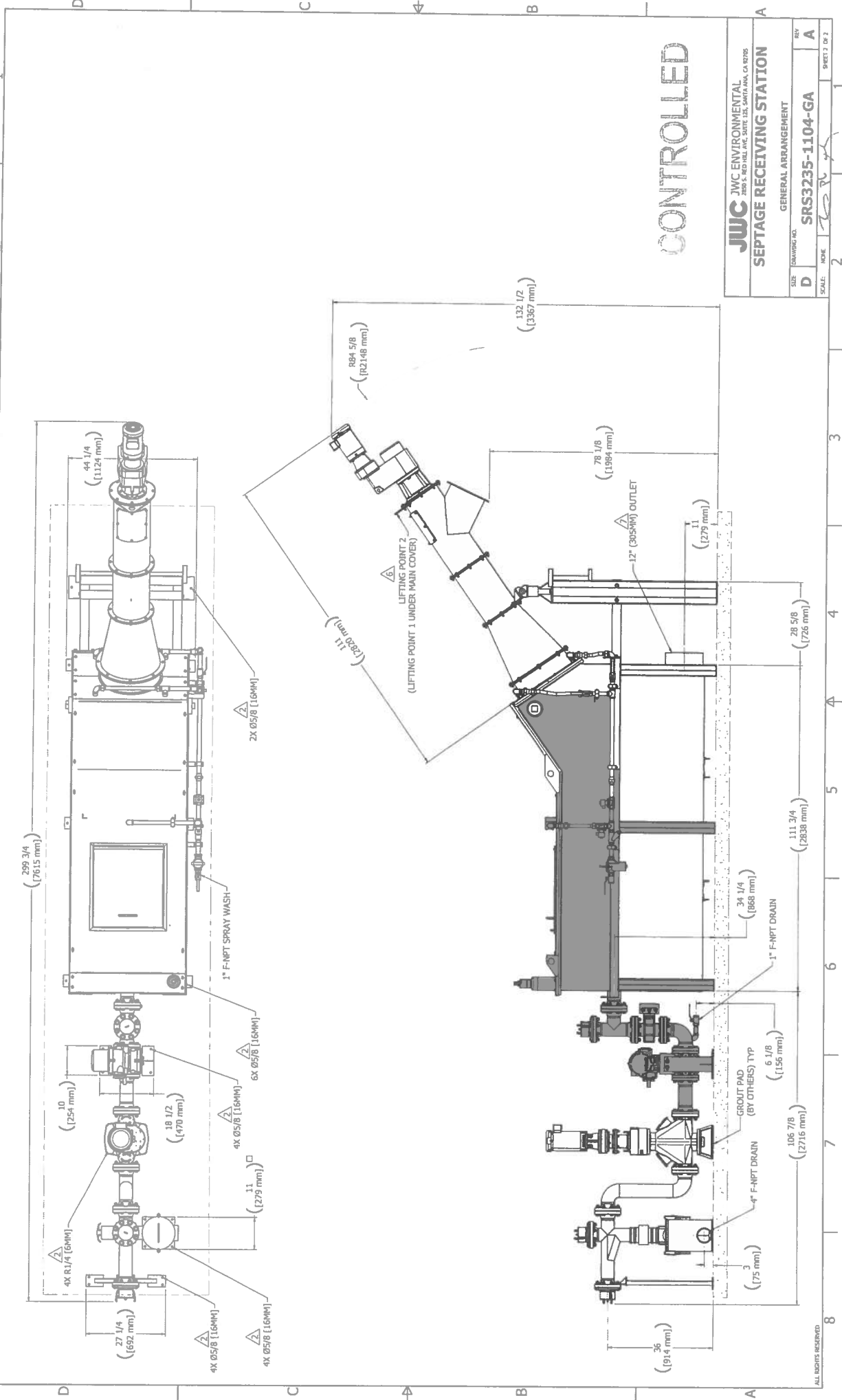
SEPTAGE RECEIVING STATION

GENERAL ARRANGEMENT

DRAWING NO. **SRS3235-1104-GA**

REV: **A**

SHEET 1 OF 2



CONTROLLED

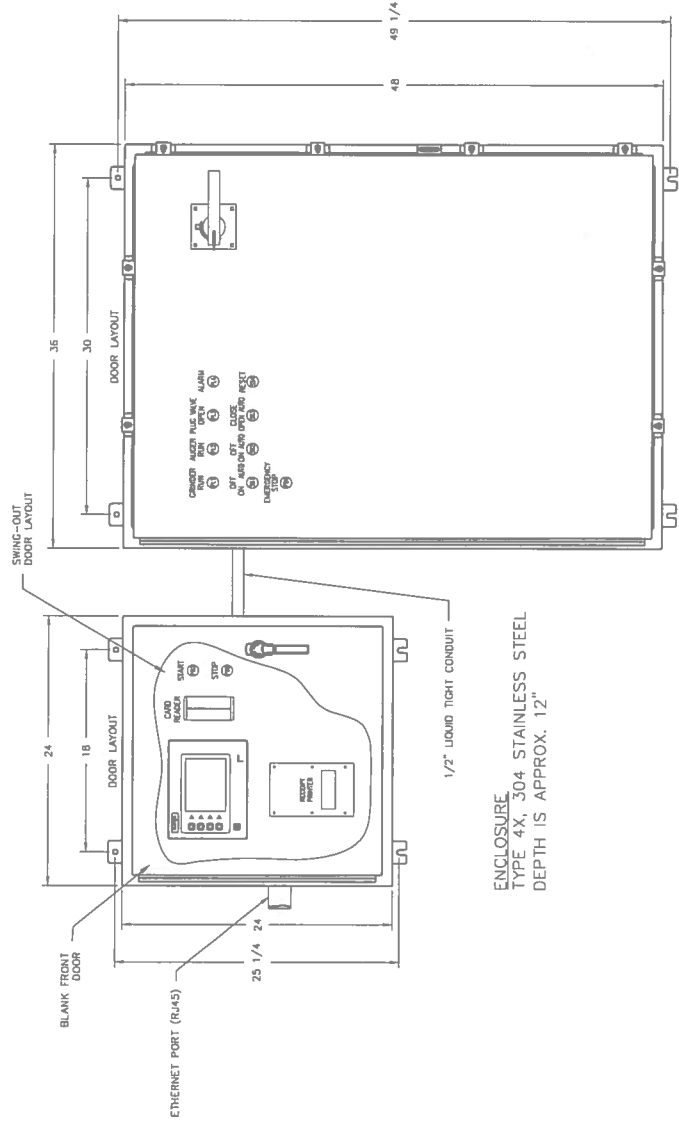
JWC JWC ENVIRONMENTAL
 2800 S. MID VAL AVE. SUITE 103, SANTA ANA, CA 92705

GENERAL ARRANGEMENT	
SIZE	DRAWING NO.
D	SRS3235-1104-GA
SCALE	REV
1/2" = 1'	A
SHEET 2 OF 2	

REV	DESCRIPTION	ECO. NO.	DATE	APPROVED
A	INITIAL RELEASE		02-12-14	[Signature]

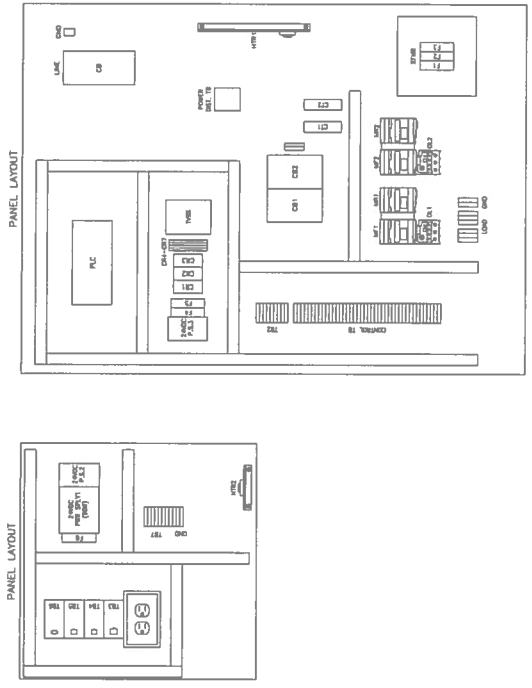
REVISIONS				

DRAWING NO. PC2450-110285	PROGRAM # PC2450-110285
-------------------------------------	--------------------------------



ENCLOSURE
TYPE 4X, 304 STAINLESS STEEL
DEPTH IS APPROX. 12"

ENCLOSURE
TYPE 4X, 304 STAINLESS STEEL
DEPTH IS APPROX. 12"

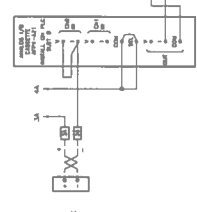


(*) NOTE: MOUNT COMPONENTS ON DIN RAIL IF POSSIBLE

THIS DRAWING AND DATA ARE FULLY PROTECTED BY THE PATENT RIGHTS OF JWC. THE INFORMATION CONTAINED HEREIN IS THE CONFIDENTIAL PROPERTY OF JWC AND IS NOT TO BE REPRODUCED, COPIED, OR TRANSMITTED IN ANY FORM OR BY ANY MEANS, ELECTRONIC OR MECHANICAL, INCLUDING PHOTOCOPYING, RECORDING, OR BY ANY INFORMATION STORAGE AND RETRIEVAL SYSTEM, WITHOUT THE EXPRESS WRITTEN PERMISSION OF JWC. ANY UNAUTHORIZED USE OF THIS INFORMATION IN CONFIDENCE WITH THE UNDERSTANDING IT SHALL BE RETURNED ON DEMAND.

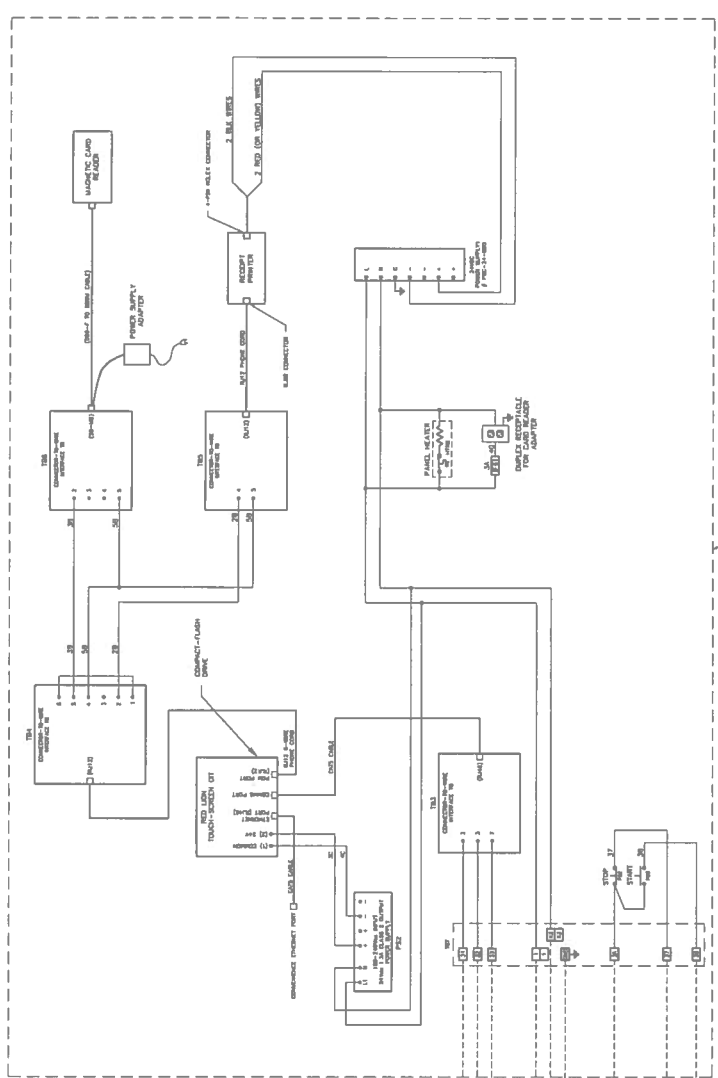
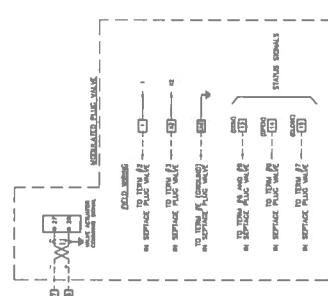
ALL RIGHTS RESERVED

JWCE JWC Environmental 2600 South Gernsey Santa Ana, CA 92707		DATE 02-12-14	
APPROVALS DRAWN: TRAN, K.		REV. NO. A	
CHECKED:		SIZE B	DRAWING NO. PC2450-110285
MANUF.:		SCALE	SHEET: 1 OF 4
		NTS	
		MODEL PC2450	
		MOTOR CONTROLLER	



INTERCONNECTING MOTOR VALVE CONTROLLER TO MOTOR PUMP (WIRING DIAGRAM #6010-100-04)

PLUG VALVE	PLUG VALVE
TERMINAL NO.	TERMINAL NO.
XZ	5
10	6
14	9
15	8
23	27
28	26
	JUMP 4 & 41



MODEL PC2450		DRAWING NO.	
MOTOR CONTROLLER		PC2450-110285	
SIZE	CODE IDENT NO.	REV.	
B	53242	A	
SCALE:	NTS	SHEET:	3 OF 4

ALARM MESSAGES:

- Grinder Jammed
- Grinder Motor Overload
- Auger Jammed
- Auger Motor Overload
- High Level Alarm

SYSTEMS MODE (GRINDER, TANK AND AUGER)

NON-PASSWORD PROTECTED SCREENS:

- Main Screen:
 - Systems Status Message:
 - Systems Not Ready
 - Systems Ready
 - Please Swipe Card to Begin
 - High Level
 - High Level Shutdown

- Card Status: Invalid Card Swiped (Only appears if an invalid card is swiped)
- Compact Flash Card Status:
 - Info/Info Shown: Compact Flash Card is installed, formatted and working properly.
 - Info/Info Hidden: Compact Flash Card is not installed.
 - CF Formatting Fault: Card is damaged
 - Checking CF Status: OIT is checking the CF Card
 - Formatting Compact Flash Card: OIT is formatting the CF Card
 - Compact Flash Card Locked: The OIT is writing to the CF Card or the card is mounted and windows is accessing the card.

7/24/2007 10:17:02 AM (Current Date, Time)

Press "Receipts/Receipts" button to reprint the last receipt

Card (Data) Screen:

- Touch the "Card Number" field to enter the card number on the keypad
- Touch the "password" field to enter the password associated with the card on the keypad
- Touch the "Cancel" button to cancel and close the screen

Messages:

- Inactive Card Number
- Incorrect Password

Start Screen:

Press the "Start" button to begin processing

Press the "Cancel" button to cancel and exit.

Processing Screen:

Press the "Stop" button to stop processing

Status Display:

- Processed Volume
- System Running Message
- Liquid Level

Memory Full Pop-up Screen:

Indicates PLC transaction memory is full and data must be stored to the CF card and cleared in the PLC

Press the "Home" button to return to the main screen

Setup Menu Access:

From the Card Input screen, press the "Menu" button to go to the Password Entry screen.

The default password is 9999.

Password Entry Screen (To get to Setup Menu)

Touch the number field to enter the password on the keypad

Press "Start/Start" button to go to the read only statistical data screen.

Press "PLC I/O Status" button to go to the PLC I/O screen.

Press "Alarm" button to view the Alarm Screen.

Press "Cancel" button to return to the previous screen.

Alarm List Screen:

Active Alarms are Shown

Press Accept to acknowledge the Alarm.

Press Alarm History to view the Alarm History Screen.

Press Exit to return to the previous screen.

Alarm History Screen:

Historical Alarms are Shown

Press Prev or Next to scroll up or down.

Press Clear History to clear the Alarm History.

Press Exit to return to the previous screen

From the Equipment status screen, press "Setup Menu" to go to the Password Entry screen.

The default password is 9999.

PASSWORD PROTECTED SCREENS:

Setup Menu Screen:
Press the "Back" button to return to the previous screen.
Press the "Log Off" button to exit and log out.

Receipts/Receipts:

Reprints the last receipt

Print Transaction List:

Printing Transactions screen will appear.

Press the "Cancel" button to stop the printer before completion

Save New Trans. To CF Card:

When the "Save New Trans" screen will appear

Press the "Cancel" button to stop the printer before completion

Start All Trans. To CF Card:

Printing Transactions screen will appear.

Press the "Cancel" button to stop the printer before completion

Erase Trans. Data:

Erase Transactions screen will appear.

Read the prompt and press the button for 3 seconds to erase the PLC transaction data

Press the "Setup Menu" button to return to the setup screen

Set Clock:

First, Load Time/Date by pressing the appropriate number field

Touch the contrast number field to adjust the screen contrast (0-100)

Touch the brightness number field to adjust the screen brightness (0-100)

Press the "Setup Menu" button to return to the setup screen

Add New Card:

Swipe card or touch the card number field to enter the card number

Touch the password number field to enter the password for the card

Press the "Setup Menu" button to return to the setup screen

Delete Card:

Touch the card number field to enter the card number

Press the "Delete" button to delete the card number

Press the "Setup Menu" button to return to the setup screen

Change Password Screen:

Touch the number field to enter the password on the keypad

Press the "Setup Menu" button to return to the setup screen

Statistical Counter:

View counter on hours, starts, overloads, overtemp, recalls, jams

Press the appropriate counter reset button 3 Seconds to reset counters

Press the appropriate counter reset button 10 Seconds to reset run times

Press the "Setup Menu" button to return to the setup screen

I/O Status:

Press "PLC I/O Status" button to go to the PLC I/O screen.

Reverse Jog:

Press "Grinder REV JOG" to reverse jog the Grinder.

Press "Auger REV JOG" to reverse jog the Auger.

Operating Parameters:

Touch the appropriate number field to enter the value on the keypad

Empty Calibration: XXX (ft. or meter) (Default: 5.00)

Full Calibration: XXX (ft. or meter) (Default: 4.17)

Volume: XXX (Default: 1)

Waste-Type Enable: On/Off (Default = Off)

Press the "Next" button to go to the Auger Run Cycle Timers setup

Press the "Setup Menu" button to return to the setup screen

Auger Run Cycle Setup Screen:

Touch the appropriate number field to enter the value on the keypad

Forward Cycle: ## Sec (Default: 999)

In stop cycle: ## Sec (Default: 0)

Reverse Cycle: ## Sec (Default: 0)

2nd Stop Cycle: ## Sec (Default: 0)

Off-Drain Cycle: ## Sec (Default: 300)

Press the "Next" button to go to the PID setup

Press the "Setup Menu" button to return to the setup screen

PID Setup Screen:

Touch the appropriate number field to enter the value on the keypad

PID Mode: Auto/Man (Default: Auto)

Setpoint (SP): XXX (Default: 72.00)

Initial PID (PID): XXX (Default: 10)

Derivative Time: ##.## (Default: 12.0)

Integral Time: ##.## (Default: 0.0)

Receipt Header Setup Screen:

Touch the appropriate field to enter the value on the keypad

**MODEL PC2450
MOTOR CONTROLLER**

SIZE	CODE IDENT NO.	DRAWING NO.	REV.
B	53242	PC2450-110285	A
SCALE: NTS			SHEET: 4 OF 4

**SOUTH COUNTY REGIONAL WASTEWATER AUTHORITY
CASH AND INVESTMENTS REPORT
AS OF MARCH 31, 2024**

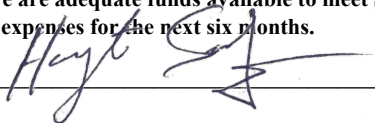
DESCRIPTION	Note		BALANCE AS OF 3/31/24
CASH IN BANK			
WELLS FARGO OPERATING ACCOUNT - SCRWA'S PORTION	1	4,364,625.77	
TOTAL BANK BALANCE			4,364,625.77
STATE OF CALIFORNIA LOCAL AGENCY INVESTMENT FUND			
SCRWA LAIF		11,642,402.26	
TOTAL LAIF			11,642,402.26
TOTAL LIQUID FUNDS			16,007,028.03
TOTAL SCRWA FUNDS			16,007,028.03

NOTE:

1. Day to day transactions are made through Gilroy's cash account. The balance held in Gilroy's account on behalf of SCRWA are typically close to zero at month end, as the majority of funds are held in the SCRWA LAIF account.
2. With the start of the SCRWA expansion the cash account may carry a negative balance since all expenses are on a reimbursement basis.

This is to certify that this schedule of investments is in compliance with SCRWA'S investment policy and that there are adequate funds available to meet SCRWA'S budgeted and actual operating expenses for the next six months.

SIGNED BY : Harjot Sangha
Finance Director



DATE: 05/16/2024

SCRWA
Portfolio Management
Portfolio Summary
March 31, 2024

Investments	Par Value	Market Value	Book Value	% of Portfolio	Term	Days to Maturity	YTM 360 Equiv.	YTM 365 Equiv.
LAIF	11,642,402.26	11,642,402.26	11,642,402.26	100.00	1	1	4.162	4.220
Investments	11,642,402.26	11,642,402.26	11,642,402.26	100.00%	1	1	4.162	4.220

Cash								
Passbook/Checking (not included in yield calculations)	4,364,625.77	4,364,625.77	4,364,625.77		1	1	0.000	0.000
Total Cash and Investments	16,007,028.03	16,007,028.03	16,007,028.03		1	1	4.162	4.220

	March 31	Month Ending	Fiscal Year To Date
Total Earnings			
Current Year		42,427.88	343,217.54
Average Daily Balance		11,217,287.31	10,473,833.13
Effective Rate of Return		4.45%	4.35%

Harjot Sangha
 Harjot Sangha, Finance Director

05/16/2024

Wastewater Acronyms

BOD	Biochemical Oxygen Demand	NPDES	National Pollutant Discharge Elimination System
COD	Chemical Oxygen Demand	PPM	Parts Per Million
DO	Dissolved Oxygen	TDS	Total Dissolved Solids
CWA	Clean Water Act	TKN	Total Kjeldhal Nitrogen
CWEA	California Water Environment Association	TOC	Total Organic Carbon
Gal	Gallons	TS	Total Solids
GPD	Gallons Per Day	TSS	Total Suspended Solids
Lbs	Pounds	VS	Volatile Solids
MGD	Million Gallons Per Day	VSS	Volatile Suspended Solids
Mg/L	Milligrams Per Liter	WDID	Waste Discharge Identification
MLSS	Mixed Liquor Suspended Solids	WDR	Waste Discharge Requirements
MLVSS	Mixed Liquor Volatile Suspended Solids		
MPN	Most Probable Number		



**Operations Management
and Facilities Services**

Jacobs Gilroy
1500 Southside Dr.
Gilroy, CA 95020
O +1 408 848 0480
F +1 408 842 0873
www.jacobs.com

Date: 4/26/2024

California Regional Water Quality Control Board
Central Coast Region
Attn: Monitoring and Reporting Review Section
Audrey Liebhaber
895 Aerovista Place, Suite 101
San Luis Obispo, CA 93401-7906

Dear Ms. Liebhaber:

Facility Name: South County Regional Wastewater Authority
WDID Number: 3 430100001
WDR Order Number: R3-2017-0028
NPDES Permit Number: CA0049964

Contact Person: John Edgar
Job Title: Project Manager
Phone Number: (408) 848-0480
Address: 1500 Southside Drive
Gilroy, CA
95020

Type of Report: Monthly
Eff_Inf_Wet
Month: **March**

Year: 2024
Violation(s): **No** **Yes**

In accordance with the Standard Provisions and Reporting Requirements, I certify under penalty of law that this document and all attachments were prepared under my direction or supervision following a system designed to assure that qualified personnel properly gather and evaluate the information submitted. Based on my knowledge of the person(s) who manage the system, or those directly responsible for data gathering, the information submitted is, to the best of my knowledge and belief, true, accurate, and complete. I am aware that there are significant penalties for submitting false information, including the possibility of fine and imprisonment.

If you have any questions or require additional information, please contact me at the number provided above.

Sincerely,

Name: John Edgar
Title: Project Manager

CC: Jimmy Forbis, SCRWA General Manager
Chris Ghione, Morgan Hill Director of Public Services
Saeid Vaziry, Gilroy Environmental Program Manager



**Operations Management
and Facilities Services**

Jacobs Gilroy
1500 Southside Dr.
Gilroy, CA 95020
O +1 408 848 0480
F +1 408 842 0873
www.jacobs.com

Date: 4/26/2024

California Regional Water Quality Control Board
Central Coast Region
Attn: Monitoring and Reporting Review Section
Audrey Liebhaber
895 Aerovista Place, Suite 101
San Luis Obispo, CA 93401-7906

Dear Ms. Liebhaber:

Facility Name: South County Regional Wastewater Authority
WDID Number: 3 430100001
WDR Order Number: R3-2017-0028
NPDES Permit Number: CA0049964

Contact Person: John Edgar
Job Title: Project Manager
Phone Number: (408) 848-0480
Address: 1500 Southside Drive
Gilroy, CA
95020

Type of Report: Monthly
Land Discharge
Month: **March**

Year: 2024
Violation(s): **No** **Yes**

In accordance with the Standard Provisions and Reporting Requirements, I certify under penalty of law that this document and all attachments were prepared under my direction or supervision following a system designed to assure that qualified personnel properly gather and evaluate the information submitted. Based on my knowledge of the person(s) who manage the system, or those directly responsible for data gathering, the information submitted is, to the best of my knowledge and belief, true, accurate, and complete. I am aware that there are significant penalties for submitting false information, including the possibility of fine and imprisonment.

If you have any questions or require additional information, please contact me at the number provided above.

Sincerely,

Name: John Edgar
Title: Project Manager

CC: Jimmy Forbis, SCRWA General Manager
Chris Ghione, Morgan Hill Director of Public Services
Saeid Vaziry, Gilroy Environmental Program Manager



**Operations Management
and Facilities Services**
 Jacobs Gilroy
 1500 Southside Dr.
 Gilroy, CA 95020
 O +1 408 848 0480
 F +1 408 842 0873
 www.jacobs.com

Date: 5/13/2024

California Regional Water Quality Control Board
 Central Coast Region
 Attn: Monitoring and Reporting Review Section
 Audrey Liebhaber
 895 Aerovista Place, Suite 101
 San Luis Obispo, CA 93401-7906

Dear Ms. Liebhaber:

Facility Name: South County Regional Wastewater Authority
WDID Number: 3 430100001
WDR Order Number: R3-2017-0028
NPDES Permit Number: CA0049964

Contact Person: John Edgar **Address:** 1500 Southside Drive
Job Title: Project Manager Gilroy, CA
Phone Number: (408) 848-0480 95020

Type of Report: Monthly **Month:** April
 Eff_Inf_Wet

Year: 2024 **Violation(s):** No Yes

In accordance with the Standard Provisions and Reporting Requirements, I certify under penalty of law that this document and all attachments were prepared under my direction or supervision following a system designed to assure that qualified personnel properly gather and evaluate the information submitted. Based on my knowledge of the person(s) who manage the system, or those directly responsible for data gathering, the information submitted is, to the best of my knowledge and belief, true, accurate, and complete. I am aware that there are significant penalties for submitting false information, including the possibility of fine and imprisonment.

If you have any questions or require additional information, please contact me at the number provided above.

Sincerely,

Name: John Edgar
 Title: Project Manager

CC: Jimmy Forbis, SCRWA General Manager
 Chris Ghione, Morgan Hill Director of Public Services
 Saeid Vaziry, Gilroy Environmental Program Manager



**Operations Management
and Facilities Services**

Jacobs Gilroy
1500 Southside Dr.
Gilroy, CA 95020
O +1 408 848 0480
F +1 408 842 0873
www.jacobs.com

Date: 5/13/2024

California Regional Water Quality Control Board
Central Coast Region
Attn: Monitoring and Reporting Review Section
Audrey Liebhaber
895 Aerovista Place, Suite 101
San Luis Obispo, CA 93401-7906

Dear Ms. Liebhaber:

Facility Name: South County Regional Wastewater Authority
WDID Number: 3 430100001
WDR Order Number: R3-2017-0028
NPDES Permit Number: CA0049964

Contact Person: John Edgar
Job Title: Project Manager
Phone Number: (408) 848-0480
Address: 1500 Southside Drive
Gilroy, CA
95020

Type of Report: Monthly
Land Discharge
Month: April

Year: 2024
Violation(s): No Yes

In accordance with the Standard Provisions and Reporting Requirements, I certify under penalty of law that this document and all attachments were prepared under my direction or supervision following a system designed to assure that qualified personnel properly gather and evaluate the information submitted. Based on my knowledge of the person(s) who manage the system, or those directly responsible for data gathering, the information submitted is, to the best of my knowledge and belief, true, accurate, and complete. I am aware that there are significant penalties for submitting false information, including the possibility of fine and imprisonment.

If you have any questions or require additional information, please contact me at the number provided above.

Sincerely,

Name: John Edgar
Title: Project Manager

CC: Jimmy Forbis, SCRWA General Manager
Chris Ghione, Morgan Hill Director of Public Services
Saeid Vaziry, Gilroy Environmental Program Manager

April 19, 2024

Jimmy Forbis
South County Regional Wastewater Authority
7351 Rosanna Street Gilroy, CA 95020

Subject: Monthly Recap of Expenses Project-to-Date March, 2024

Dear Jimmy,

The project-to-date financial information for March is portrayed in the Operations, Solids Disposal, and Electricity Categories for the Municipal Facility.

- March's total operating expenses amount to \$775,865
- Fiscal Year operating expenses amount to \$6,420,893

March 2024

Expense Categories	MARCH		FY 2023-2024 to Date		Total Annual Budget	% of Annual Budget Expended
	ACTUAL	BUDGET	ACTUAL	BUDGET		
Direct Cost (Not including solids, repairs, PW)	\$ 360,420	\$ 359,377	\$ 2,754,730	\$ 2,810,985	\$ 3,747,980	73%
Indirect Cost, Overhead & Management Fee	\$ 87,871	\$ 87,871	\$ 790,835	\$ 790,835	\$ 1,054,447	75%
Prevailing Wage Certified Payroll	\$ 48,821	\$ 28,035	\$ 249,577	\$ 252,316	\$ 336,422	74%
Repairs	\$ 51,100	\$ 66,923	\$ 192,874	\$ 521,998	\$ 695,998	28%
Solids Handling and Transportation	\$ 114,021	\$ 139,781	\$ 1,064,711	\$ 1,258,031	\$ 1,677,375	63%
Electricity	\$ 113,633	\$ 157,953	\$ 1,368,166	\$ 1,421,577	\$ 1,895,436	72%
TOTAL	\$ 775,865	\$ 839,940	\$ 6,420,893	\$ 7,055,743	\$ 9,407,657	68%

Should there be any questions, please do not hesitate to contact me.

Regards,



John Edgar
Project Manager
via email

cc: Saeid Vaziry (email)
Erik May (email)
Stephen French (email)
Heath McMahan (email)
File

May 15, 2024

Jimmy Forbis
South County Regional Wastewater Authority
7351 Rosanna Street Gilroy, CA 95020

Subject: Monthly Recap of Expenses Project-to-Date April, 2024

Dear Jimmy,

The project-to-date financial information for April is portrayed in the Operations, Solids Disposal, and Electricity Categories for the Municipal Facility.

- April's total operating expenses amount to \$664,145
- Fiscal Year operating expenses amount to \$7,085,039

April 2024

Expense Catagories	APRIL		FY 2023-2024 to Date		Total Annual Budget	% of Annual Budget Expended
	ACTUAL	BUDGET	ACTUAL	BUDGET		
Direct Cost (Not including solids, repairs, PW)	\$ 288,680	\$ 288,809	\$ 3,043,410	\$ 3,099,794	\$ 3,747,980	81%
Indirect Cost, Overhead & Management Fee	\$ 87,871	\$ 87,871	\$ 878,706	\$ 878,706	\$ 1,054,447	83%
Prevailing Wage Certified Payroll	\$ 48,254	\$ 28,035	\$ 297,831	\$ 278,195	\$ 336,422	89%
Repairs	\$ (2,821)	\$ 53,538	\$ 190,054	\$ 575,537	\$ 695,998	27%
Solids Handling and Transportation	\$ 113,889	\$ 139,781	\$ 1,178,600	\$ 1,397,813	\$ 1,677,375	70%
Electricity	\$ 128,272	\$ 157,953	\$ 1,496,438	\$ 1,567,380	\$ 1,895,436	79%
TOTAL	\$ 664,145	\$ 755,987	\$ 7,085,039	\$ 7,797,423	\$ 9,407,657	75%

Should there be any questions, please do not hesitate to contact me.

Regards,



John Edgar
Project Manager
via email

cc: Saeid Vaziry (email)
Erik May (email)
Stephen French (email)
Heath McMahan (email)
File



April 10, 2024

Sally Lee
Santa Clara Dept. of Environmental Services
1555 Berger Drive, Bldg. 2, Suite 300
San Jose, CA 95112-2716

Re: Septage Disposal -

March 2024

Dear Ms. Lee,

Attached is the Septage Disposal Report for the SCRWA facility which shows monthly volume and fees, and haulers daily volume summary.

Sincerely,

Kerry Edmonds

Kerry Edmonds
Project Assistant
Jacobs – Gilroy/Morgan Hill

via email:

sally.lee@cep.sccgov.org
swpadmin@cep.sccgov.org
jimmy.forbis@ci.gilroy.ca.us
john.edgar@jacobs.com

cc:

File 16.12

Monthly Septage Summary

March 2024

Date	Als Septic	Arggo Builders	Central Coast Services	Cids Septage	Cost U Less	Crown Sanitation	Lime Site Services	M. Servin Portable Toilets	Morton Septic	NextCro p	Reys	Ryans Pumping Service	Tarin Septic Services	Toms Site Services	Western Site Services	City of Gilroy	City of Morgan Hill
1			300	2,000			1,050		2,200		100		1,500				
2																	
3																	
4	3,360		260	2,700	400			350	2,000	400		1,500					
5	3,360	645		500	900	1,350		350	2,200		150						
6	1,500				800			1,020	2,700					444			
7	3,360	550	300	1,200	800	300	900	320	2,500		150		1,200		946		
8	2,700		290	1,200		600			2,200								
9																	
10																	
11	1,500			350	800	100			3,400							2,000	
12		360	220	2,700	1,200	1,000			2,000								
13			110	1,200	400	400	700	360	2,200		150			384			
14	3,800	315		1,200	800		1,800	340	3,500								100
15			340		400	300	1,800	280			150						
16								380									
17																	
18	1,500			500	1,200	130			3,650	400							
19		470	340	1,200	1,200	900		350	2,110		160		1,200				
20					400	375	600	350	3,700					384			
21	1,500	650	255		1,200				1,800		160						
22			145		800	850	1,900		3,400								
23																	
24																	
25			250	1,200	800	350		370	3,700								
26		425	300	750	800			705	2,050		150						
27	4,500		220		800	150			2,700				1,200	384			
28	6,060		195		800	1,350			2,450		175						
29	3,000			1,700	1,200	150			3,950								
30																	
31																	
Total GAL	36,640	3,190	3,385	22,000	15,700	8,305	8,750	5,175	54,410	800	1,345	1,500	5,100	1,596	946	2,000	100
Total \$	5,496.00	478.50	507.75	3,300.00	2,355.00	1,245.75	1,312.50	776.25	8,161.50	120.00	201.75	225.00	765.00	239.40	141.90		

Total Billable Gallons: 168,842.00

Total Billable Amount: \$25,326.30



Operations Management
and Facilities Services

1500 Southside Dr.
Gilroy, CA 95020
O +1 408 848 0480
F +1 408 842 0873
www.jacobs.com

May 14, 2024

Sally Lee
Santa Clara Dept. of Environmental Services
1555 Berger Drive, Bldg. 2, Suite 300
San Jose, CA 95112-2716

Re: Septage Disposal - April 2024

Dear Ms. Lee,

Attached is the Septage Disposal Report for the SCRWA facility which shows monthly volume and fees, and haulers daily volume summary.

Sincerely,

Kerry Edmonds

Kerry Edmonds
Project Assistant
Jacobs – Gilroy/Morgan Hill

via email: sally.lee@cep.sccgov.org
swpadmin@cep.sccgov.org
jimmy.forbis@ci.gilroy.ca.us
john.edgar@jacobs.com

cc: File 16.12

Engineering Projects Report

June 5, 2024

TREATMENT CAPACITY EXPANSION PROJECT

Status: **PG&E service change process (Dec 2021)** – Application submitted to utility to study system needs
BAAQMD permit to operate (Dec 2021) – Application in review by local air district (Submitted)
NPDES permit change (March 2022) – Adoption of new permit by State Water Board (Submitted)
New plant construction and commissioning (2021- 2025) – In compliance with permits
Board presentation (2025) – Board accepts completed project

Construction management and inspection services are ongoing. Current activities include mechanical installation for blowers building areas and functional testing and startup for the dewatering facility. Current work includes review of major equipment submittals, shop drawings, contract document clarifications, and contractor's request for information and outline of startup/commissioning plan.

Status	2024											
	Jan	Feb	Mar	Apr	May	Jun	July	Aug	Sep	Oct	Nov	Dec
Construction	◆											
PG&E Application						→						
Air District Permit						→						
NPDES Permit						→						

Key Milestones	CEQA, Bid Advertisement Process	Board Certified CEQA & Authorizes Bidding	Board Reviews Bids and Awards Contract	Permits & Plant Expansion Construction	Board Accepts Completed Project
Forecast	Oct 2020	Nov 2020	May 2021	2021 - 2025	2025

NPDES/WDR PERMIT RENEWAL

Phase: In Permit Compliance
Project Status: Ongoing tasks

State permit was adopted in 2017. A groundwater study and report as required by the Permit was submitted in 2018. Groundwater contour mapping for the First Quarter Groundwater Monitoring report is complete. Meeting with RWQCB was conducted in September 2023. Responses to NPDES DRAFT comments were provided to RWQCB in February 2024.

Key Milestones	Adopted Permit	Groundwater Contour Study	Permit Compliance
Forecast	November 2017	April 2018	Ongoing

RECYCLED WATER SYSTEM SUPPORT

Phase: Ongoing operations, maintenance and customer permit support
Project Status: On Schedule

Ongoing review of customer permits, site inspections, and update of records for new and existing users are in progress. Annual self-inspection and Recycled Water Users Training is scheduled for summer 2024. Permit application review for new recycled water users was conducted during the reporting period.